

Step into a magical oasis...7250 Bethany Place, Sooke



Status:	Active	2020 Asmt:	\$543,000
Sub Type:	SF Det	Strata Fee:	\$83
Layout:	Rancher	Lot Size:	9,583sqft / 0.22ac
Bedrooms:	3	Park Spcs:	2
Bathrooms:	2	Built (est):	1996
Kitchens:	1	Basement:	3' 6" / Crawl Space
Fireplaces:	1		
Fin Sqft:	1717		
Unfin Sqft:	0		

Interior Features: Closet Organizer, Dining Room, Eating Area, French Doors

Appliances Included: Dishwasher, F/S/W/D, Range Hood

Heating: Baseboard, Electric, Heat Pump, Propane

Roof: Fibreglass Shingle

Foundation: Poured Concrete

Parking: Attached, Driveway, Garage Double

Exterior Features: Balcony/Patio, Fencing: Partial, Garden



KIMBERLY  **LEGEARD**
XOXOHOMES.CA

Kimberly Legeard 250.217.9751

REALTOR®

E KimberlyLegeard@gmail.com W XoxoHomes.ca



Although this information has been received from sources deemed reliable, we assume no responsibility for its accuracy, and without offering advice, make this submission to prior sale or lease, change in price or terms, and withdrawal without notice.



KIMBERLY  **LEGEARD**

XOXOHOMES.CA



7250 Bethany Place, Sooke

Exquisite...From the moment you enter this magical oasis, it feels like home. Nestled in an exceptional setting only a stones throw to spectacular oceanside trails, minutes to world class fishing and all that the charming community of Sooke has to offer. This sought after Whiffin Spit location is a true beauty. Inspired one level design with 3 spacious bedrooms, 2 full sized baths, sit-up breakfast bar, generous kitchen filled with extra cabinetry, large laundry/mud room, double garage. Finished with real Oak wood and tile floors, ductless heat pump, central vacuum and gas fireplace. Surrounded by windows and enhanced with french doors, this home is filled with sunlight and offers showcase outlooks from every primary room. Seamless flow to a charming covered patio, stunning gardens and a "secret" veggie patch complete with greenhouse and garden shed. Enjoy bebies in the hot tub or relax with coffee on a second sunny patio with peak-a-boo views of the sea. Pride of ownership throughout.

Video & 3D Tour available.

\$839,000

Leading REAL ESTATE COMPANIES IN THE WORLD®

LUXURY PORTFOLIO INTERNATIONAL®

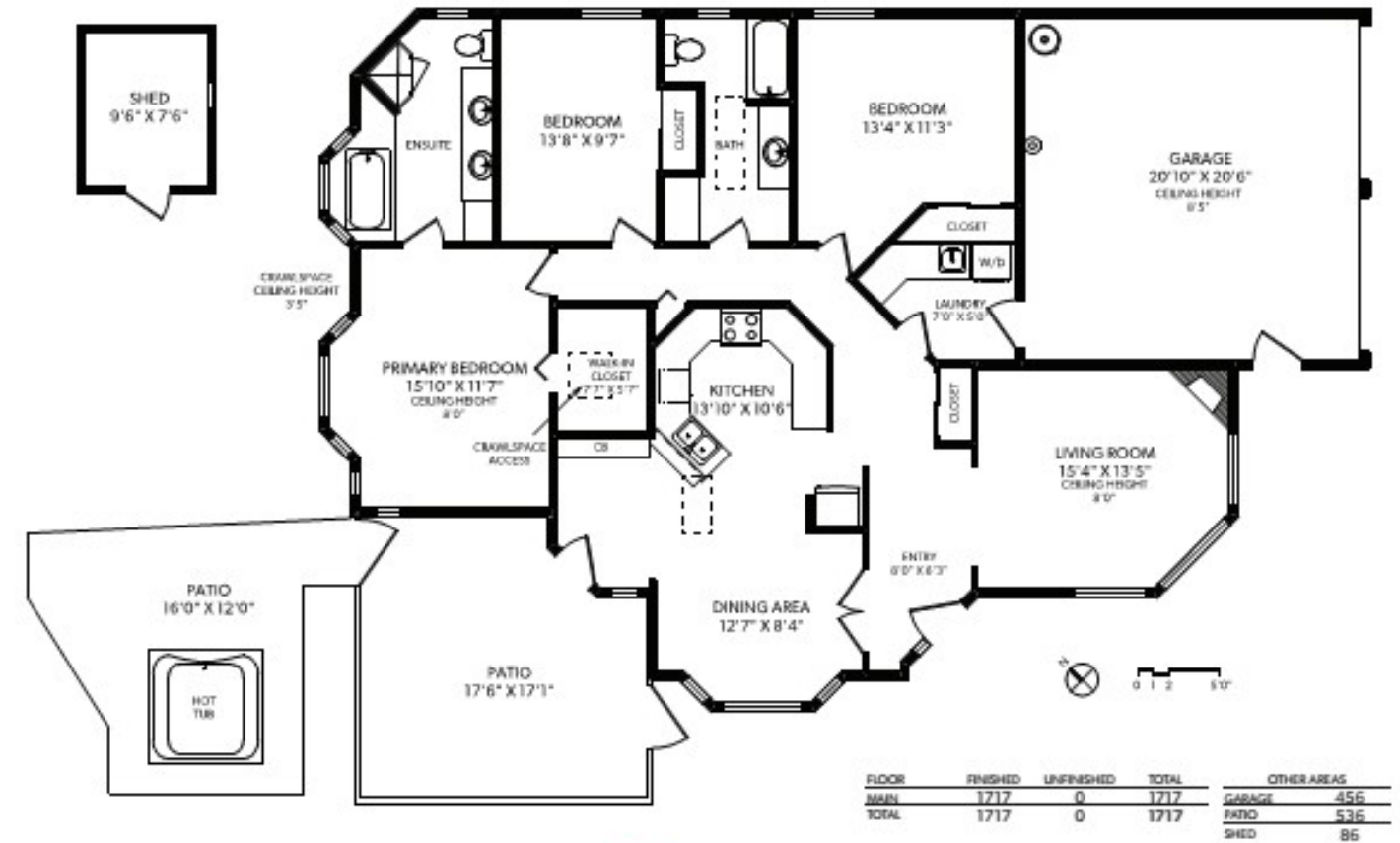
QUALIFIED MEMBER FIRM

Kimberly Legeard 250.217.9751

REALTOR®

E KimberlyLegeard@gmail.com W XoxoHomes.ca

Macdonald Realty Ltd. This communication is not intended to cause or induce breach of an existing agency agreement.



KIMBERLY  LEGEARD
XOXOHOMES.CA



7250 Bethany Place, Sooke

Price:	\$839,000	Living Room:	15'4" x 13'5"	Bedroom:	13'4" x 11'3"
Finished Area Size:	1,717	Dining Room:	12'7" x 8'4"	Bedroom:	13'8" x 9'7"
Strata Fee:	\$83	Kitchen:	13'10" x 10'6"	Garage:	20'10" x 20'6"
Gross Taxes (2020):	\$2,938	Master Bedroom:	15'10" x 11'7"		

Room sizes and measurements are approximate and should be verified by buyer.